

Track and Field

- Grandstand built into slope - allows for handicapped access on top
- Concessions, restrooms, lockerroom, and storage possibilities.
- Walls not built into slope preventing access to underside of grandstands.
- In existing location on site.
- Overlook from top of grandstands & parking are to track & field.
- Minimum size shown - updated size larger than original.

Ball Field

- No updates to field per Committee Request.
- Right field regraded to 300' will require a wall to accomodate slope.

Multi-Use/Practice Field

- Flat open space for practice, events, etc.
- Located in Grove Area.
- Shown at smaller size than other options per Committee Request

Park Pool Space

- Two pools, one larger adult pool, one smaller childrens pool
- Bath house, changing, restrooms, concessions, etc. in building
- Fenced in area with lounge, activity, & concession spaces
- Set in large slope area in northwest portion of site.

Stage/Bandstand

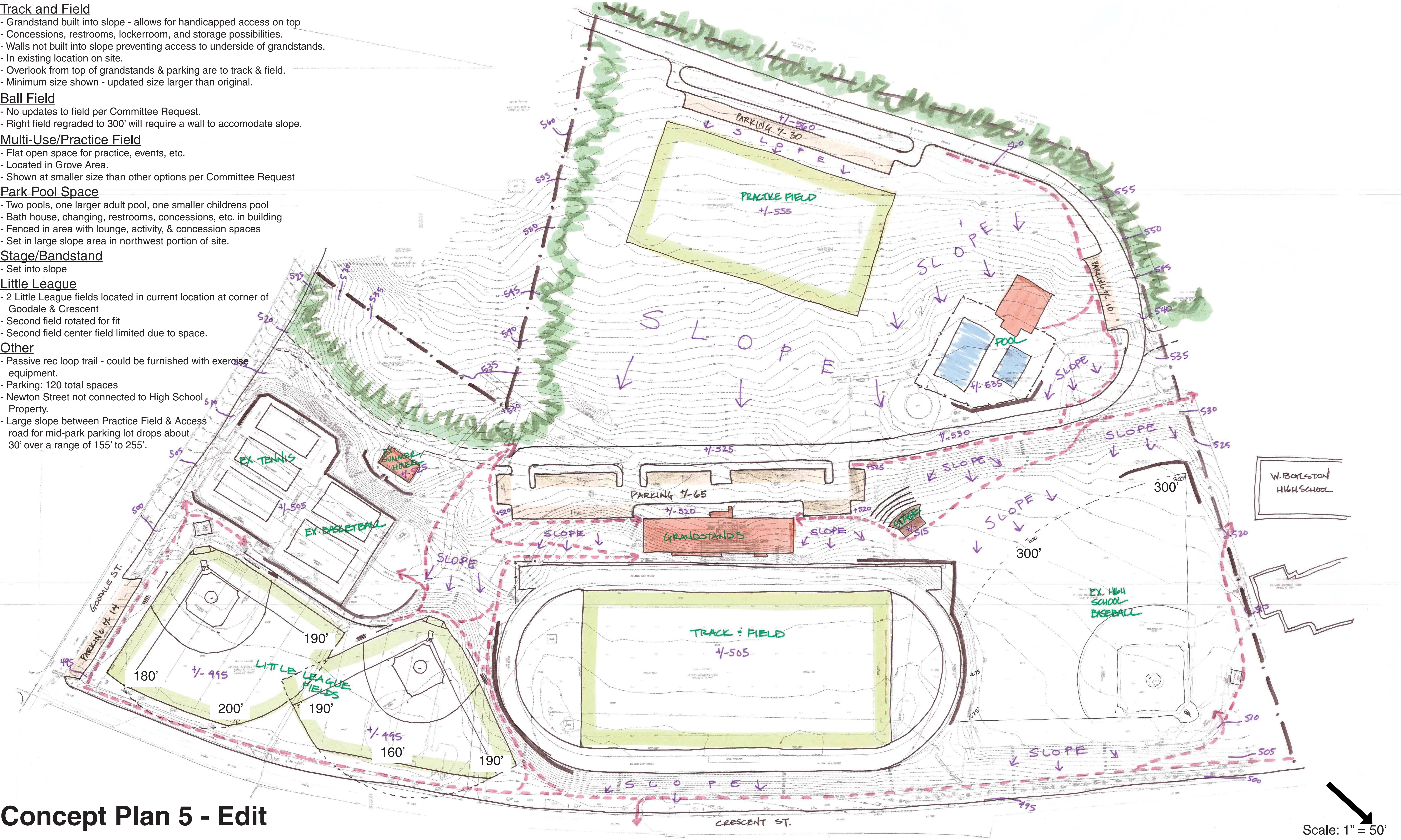
- Set into slope

Little League

- 2 Little League fields located in current location at corner of Goodale & Crescent
- Second field rotated for fit
- Second field center field limited due to space.

Other

- Passive rec loop trail - could be furnished with exercise equipment.
- Parking: 120 total spaces
- Newton Street not connected to High School Property.
- Large slope between Practice Field & Access road for mid-park parking lot drops about 30' over a range of 155' to 255'.



Concept Plan 5 - Edit